

Thank you for your interest in deploying Infolytik MetaMiner!

MetaMiner 5 is the next-generation analytic super-platform for SAP BusinessObjects and Tableau Enterprise, offering metadata management, administration and output validation across the complete analytic landscape. With deeper insights and automated workflow, organizations can focus more on their business and less on administrative tasks of their BI infrastructure – saving time and reducing costs.

This document should be used to understand the hardware, software and other requirements that must be obtained prior to installing MetaMiner 5.

1. Network & enterprise policy requirements
2. SAP BusinessObjects and/or Tableau Enterprise Server requirements
3. Hardware requirements
4. Database requirements
5. Credentials & environment information needed for installation

Network & Enterprise Policy Requirements:

- In order to utilize the MetaMiner Client, an available port of your choice (MetaMiner chooses **49714** by default) must be open across your firewall /corporate network (including any VPN layers) between the MetaMiner Client (typically your workstation) and MetaMiner Server.
- **Pulse** monitoring and dashboard software uses port **3000** by default for its web server. It should be open across your firewall
- All **SAP BI4 CMS and Audit DB IPs and ports** should be reachable from the MetaMiner Server
- All **BI4 Service Ports should be reachable from the MetaMiner Server** e.g. 6400
- It's recommended you use **explicit request ports for your BI services (CMC > Servers > Properties)**
- Virus scanners can affect the speed of the installation and it is therefore recommend, if possible, to disable any virus scanning software during the installation of MetaMiner.

MetaMiner Server Hardware Requirements: MetaMiner requires that one available workstation (a server-grade dedicated system for moderate/large landscapes **is preferred**) with local Administrator rights is accessible on the same domain as which both Tableau Enterprise and/or SAP Business Objects Environment is located. The following operating systems are supported for running **MetaMiner Enterprise Server**:

- Windows 2012/2016 (physical or virtualized)
- Linux (CentOS 7.2, 7.4, Ubuntu 16.x)
- ****Linux on POWER (RHEL 7.2 for POWER8, RHEL 7.4 for POWER9) LITTLE ENDIAN**
- For more details on understanding Linux on POWER supported configurations, see:
<https://www.ibm.com/support/knowledgecenter/en/linuxonibm/liaam/liaamdistros.htm>)
- CPU / RAM / DISK SPACE – **see platform specific charts in sections below for SAP or Tableau**
- **How do I read this chart?** Each cell illustrates the requirement of the target MetaMiner Server as:

CORES / # MB or GB RAM / Hard Drive Space (gb). So "10/10/100mb" means "A 10 cpu system with 10gb RAM and 100mb of disk space"

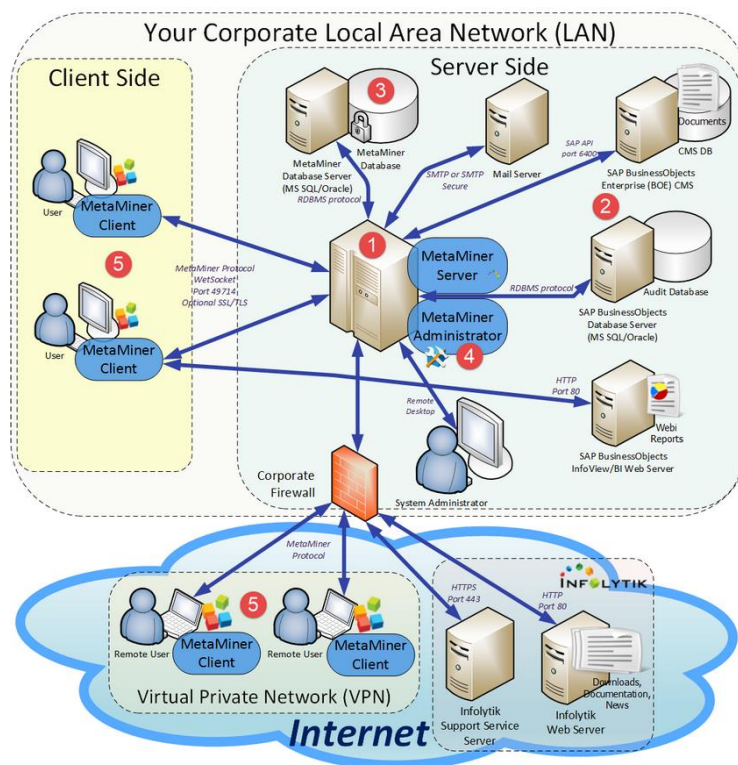
MetaMiner for SAP BusinessObjects

BusinessObjects Requirements:

- Supports multiple BO environments in BI3.x and XI4.x (all service packs)
- BO Credentials: MetaMiner server will need to have its own enterprise user account that is not the administrator but is a **member of the administrator group**. MetaMiner should not be given an existing enterprise user account.

MetaMiner (for SAP BusinessObjects Environments)

# Concurrent users	# of Webi, Lumira, Crystal, Analysis, Analysis Workbook non-instance documents					
	Up to 10k	10k—50k	50k-100k	100k-200k	200k-400k	400k+
1-25	4/16/100gb	4/16/200gb	4/16/100gb	4/16/500gb	4/32/1TB	4/48/1TB
25-50	4/16/100gb	4/16/200gb	4/16/100gb	4/16/500gb	4/32/1TB	4/48/1TB
50-100	4/16/100gb	4/16/200gb	4/16/100gb	4/16/500gb	4/32/1TB	8/48/1TB
100-150	4/16/100gb	4/16/200gb	4/16/100gb	4/16/500gb	4/32/1TB	8/64/1TB
150-200	4/16/200gb	4/32/200gb	4/16/200gb	4/32/500gb	4/32/1TB	8/64/1TB
200-250	4/16/200gb	4/32/200gb	4/16/200gb	4/32/500gb	8/48/1TB	8/64/1TB
250-300	4/32/200gb	4/32/200gb	4/32/200gb	4/48/500gb	8/48/1TB	8/64/1TB
300+	4/32/200gb	4/32/200gb	4/32/200gb	4/48/500gb	8/48/1TB	8/64/1TB



SAP BusinessObjects XI3/BI4 – Credential Requirements

- For EACH **SAP BusinessObjects environment** MM will be connected to, MM will need the following:

CMS Server Name	
CMS Port	
MM's CMS User Name*	
MM's CMS Password*	

- For EACH **SAP BusinessObjects Audit Database** MM will be connected to, MM will need the following:

DB Server	
DB Database Name	
DB Service/SID/Instance Name	
DB Port	
DB Username	
DB Password	

- For EACH **SAP BusinessObjects CMS Database** MM will be connected to, MM will need the following:

DB Server	
DB Database Name	
DB Service/SID/Instance Name	
DB Port	
DB Username	
DB Password	

MetaMiner for Tableau Enterprise

Tableau Enterprise Server Requirements:

- Supports multiple Tableau Enterprise environments (current supported versions: 10.4, 10.5, 2018.1)
- Tableau Credentials: Gateway Name (Portal URL), Tableau Administrator Username, Tableau Administrator Password, Tableau Postgres Repository Hostname, Tableau Postgres Repository DB Name (usually “*workgroup*”), *readonly* account password (note: **readonly** must be enabled)

MetaMiner – Tableau Server

# Concurrent users	# Workbooks				
	(Note: depending on embedded data source sizes, more specific assessment could be required)				
	1-500	500-1000	1000-2000	2000-5000	5000+
1-25	4/16/200gb	4/16/400gb	4/16/600gb	4/32/800gb	4/48/1TB
25-50	4/16/200gb	4/16/400gb	4/16/600gb	4/32/800gb	4/48/1TB
50-100	4/16/200gb	4/16/400gb	4/32/600gb	4/32/800gb	4/48/1TB
100-150	4/16/200gb	4/32/400gb	4/32/600gb	4/32/800gb	4/48/1TB
150-200	4/16/200gb	4/32/400gb	4/32/600gb	4/32/800gb	8/48/1TB
200-250	4/32/400gb	4/32/400gb	4/32/600gb	4/32/800gb	8/48/1TB
250-300	4/32/400gb	4/32/400gb	4/32/600gb	4/32/800gb	8/64/1TB
300+	4/32/400gb	4/32/400gb	4/32/600gb	4/32/800gb	8/64/1TB

Tableau Enterprise Server – Credential Requirements

- For EACH **Tableau Enterprise Server environment** MM will be connected to, MM will need the following:

Gateway Server Host (Portal URL)	
Username (Admin level)	
Password	
Postgres Repo <i>DB name</i>	<i>workgroup</i>
Postgres Repo <i>User name</i>	<i>readonly</i>
Postgres Repo <i>readonly</i> password	

- Note: If deploying MetaMiner on hybrid landscapes (BOBJ and Tableau), then take the higher of the two configurations as the main server requirement to support both environments **or consult with Infolytik Technical Team** for further guidance.
- Note: If deploying for multiple environments (Tableau Dev, Tableau Prod, for example) from the same MetaMiner installation, then discuss with Infolytik Support about usage characteristics of non-Production environments for optimal configuration.
- Local Administrator privileges on MetaMiner host server
- SAP BI4 or XI3 client tools installed (if needed)
- TabCmd (from: <https://www.tableau.com/support/releases/server> **TabCmd for Server only**)

MetaMiner Database Requirements (MMDB):

At this time, MetaMiner no longer requires a separate database. Postgres 10 comes embedded with MetaMiner and all sizing requirements for its internal database are assessed through the sizing chart presented in this document.

Credentials & Environment Information Needed for Installation

- MMDB Postgres embedded database (*built-in* ; no need to modify these)

DB Server	<i>pre-configured with MetaMiner</i>
DB Database Name	<i>pre-configured with MetaMiner</i>
DB Service/SID/Instance Name	<i>pre-configured with MetaMiner</i>
DB Port	<i>pre-configured with MetaMiner</i>
DB Username	<i>pre-configured with MetaMiner</i>
DB Password	<i>pre-configured with MetaMiner</i>

Need more help? Don't hesitate to contact us at:

email: support@infolytik.com

tel: 609-920-0234

web: <https://www.infolytik.com>